



YAMANAKA

6696 Highlander Way
Crozet, Virginia 22932

VirginiaCountryLiving.com/6696-highlander-way





Yamanaka

“in the mountains”

Discover the enchanting beauty of Yamanaka, a stunning post and beam mountain retreat that seamlessly merges sophisticated design with the tranquility of nature. Perched on 42 +/- wooded acres, this extraordinary home offers breathtaking panoramic mountain views and warm rustic elegance. The artful post and beam construction showcases craftsmanship, creating a timeless aesthetic where natural wood elements blend harmoniously with expansive glass and open spaces.

Every detail has been thoughtfully crafted to enhance the serene atmosphere, making it the perfect sanctuary for those seeking both privacy and beauty. Whether you are relaxing in the spacious great room, unwinding in the hot tub under the stars, or hosting guests in the expansive terrace-level family room, Yamanaka offers a timeless escape where modern comforts and natural beauty exist in perfect harmony.





The Entry



Step into a warm and inviting entryway that perfectly sets the tone for this charming mountain retreat. Beautiful natural wood elements are featured throughout, from the polished hardwood floors to the finely crafted staircase railing. Large windows allow abundant natural light to flow in, providing serene views of the surrounding wooded landscape.

The foyer seamlessly transitions into the open living spaces, offering glimpses of the great room's soaring ceilings and impressive architecture. Artful lighting fixtures enhance the rustic yet refined aesthetic, creating a welcoming atmosphere that immediately feels like home.

The Kitchen



Experience the perfect balance of charm and functionality in this well-appointed kitchen. Rich cherry cabinetry and beautiful stone floors set a warm, inviting tone, complemented by gleaming black granite countertops that provide ample workspace for culinary creativity.

The kitchen window conveniently opens to the large screened-in porch, creating a connection between indoor cooking and outdoor dining or relaxation. The generously-sized farmhouse sink and high-end appliances ensure both practicality and style.

The Dining Room & Sun Room



The open dining area offers a warm and inviting space perfect for hosting gatherings or enjoying everyday meals. Framed by beautiful woodwork and flooded with natural light, this area connects to the great room, creating a fluid transition for entertaining or simply relaxing.

Adjoining the dining space is a charming sunroom with heated floors, surrounded by large windows that showcase the beauty of the wooded landscape. This bright, cheerful area is perfect for a cozy reading nook or a peaceful retreat to enjoy your morning coffee while soaking in the natural views. The sunroom opens onto a spacious screened porch, providing an effortless flow between indoor and outdoor living. Ideal for al fresco dining or lounging on warm summer evenings, the porch offers a tranquil setting to enjoy the fresh mountain air and the serene beauty of the surroundings.





The Great Room

Step into the heart of this captivating home; a stunning great room designed to embrace the natural beauty surrounding you. Soaring cathedral ceilings clad in warm, honey-toned wood create an inviting, rustic elegance that perfectly complements the panoramic views framed by expansive, floor-to-ceiling windows.

Natural light pours into the space, enhancing the cozy ambiance provided by the central wood stove, which stands ready to offer warmth and charm on crisp mountain evenings. The open-concept design flows effortlessly into the dining area and beautifully appointed kitchen, making this great room an ideal space for entertaining.

Whether you are gazing at the breathtaking views, enjoying the glow of a crackling fire, or gathering with friends and family, this great room offers a welcoming mountain retreat.





The Study Discover a serene and thoughtfully designed study that provides the perfect setting for quiet reflection. The space is beautifully framed by exposed wood beams and polished hardwood floors that enhance the warm, inviting atmosphere. A striking octagonal window serves as a focal point, offering picturesque views of the surrounding forest, while allowing natural light to flood the room.



The Loft Retreat

The loft area, located just off the primary suite, serves as a versatile and inviting retreat that offers a quiet haven. With its soaring vaulted ceilings, warm natural wood finishes, and expansive windows, this open space is bathed in natural light and showcases tranquil views of the surrounding woods.

Whether you envision it as a cozy sitting area, an artist's studio, a reading nook, or even a home office, the loft provides a peaceful and flexible space that complements the primary suite perfectly. The seamless flow from the main living area to this private haven offers a sense of sanctuary and relaxation, making it an ideal spot to recharge and enjoy the serene beauty of the home's wooded setting.



The Primary Suite

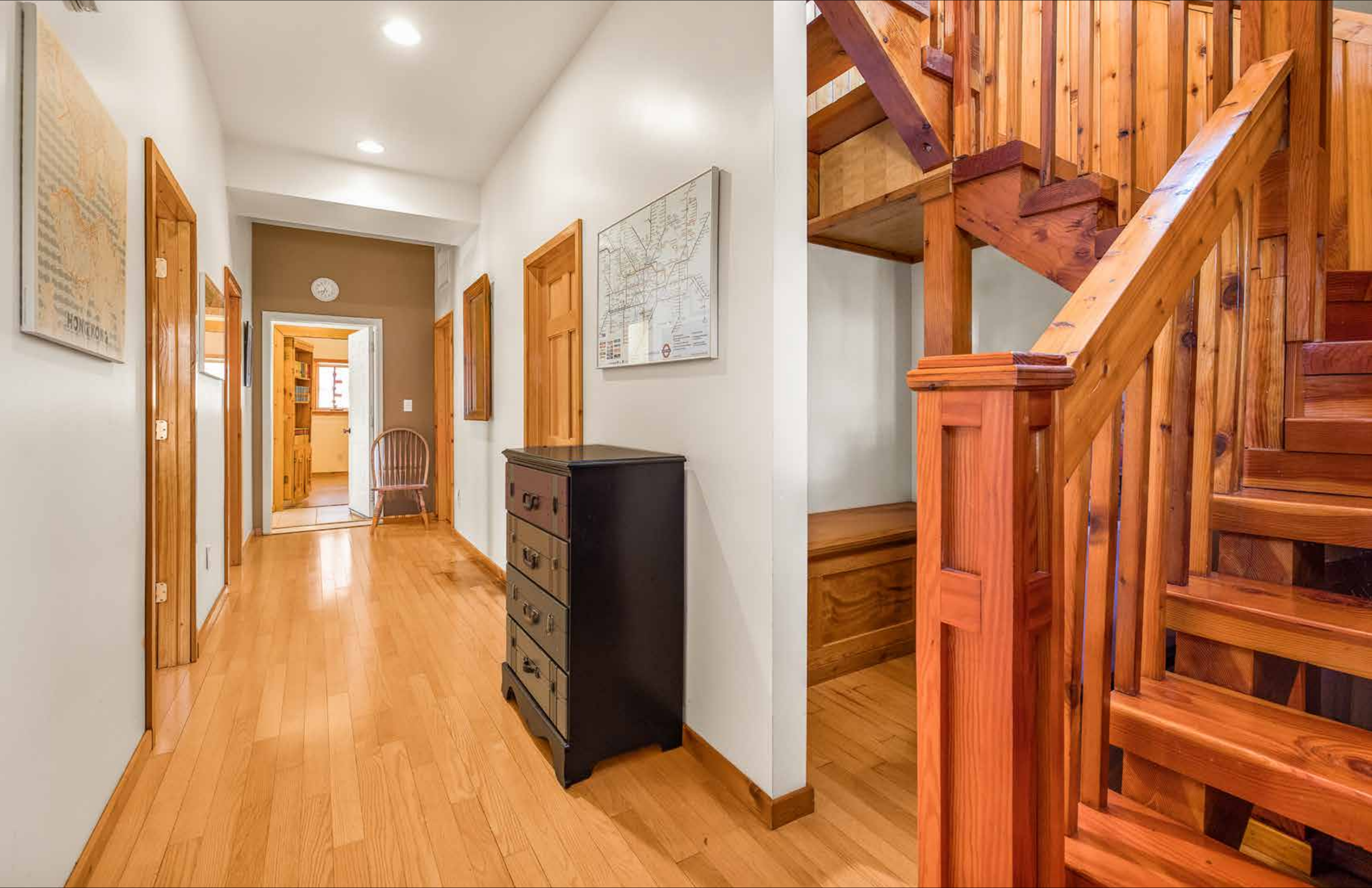


Retreat to the spacious and serene primary suite, a beautifully designed space that offers breathtaking views of the surrounding woods from nearly every angle. The soaring vaulted ceilings with rich wood beams create an airy, open atmosphere while enhancing the natural warmth and beauty.

The suite includes a walk-in closet thoughtfully organized to provide ample storage and convenience. The adjoining en-suite bathroom is appointed with dual pedestal sinks, heated stone flooring, a walk-in shower, and plentiful natural light.

Whether you're unwinding in the comfort of the bedroom, preparing for the day in the bathroom, or enjoying the peaceful forest views, this primary suite provides a perfect blend of rustic charm and modern comfort.





The Terrace Level



The terrace level of this enchanting home offers versatile living spaces designed for comfort and functionality.

The first bedroom is bright and welcoming, featuring natural light, soft wood accents, and direct access to the outdoors. Its cozy yet airy design makes it a peaceful retreat for guests or family members.

A cleverly designed multi-purpose room with custom-built cabinetry and shelving includes a Murphy bed that can be tucked away when not in use, transforming the space into a third bedroom, an ideal office, reading room, or hobby area.

Additionally, a well-appointed bathroom on this level includes a convenient walkout door to the deck.

These terrace-level rooms offer both privacy and accessibility, making them a perfect complement to the home's overall design.







The Family Room

The terrace level boasts a family room with recessed lighting and natural wood accents that complement the natural surroundings.

Custom built-in shelving offers abundant storage and display space for books, art, or personal treasures.

This versatile family room also includes a unique wet bar with metal backsplash, open shelving for glassware and spirits, and a rustic wood countertop that adds a touch of artisanal craftsmanship.

Large sliding glass doors provide seamless access to the outdoor deck and hot tub, allowing for easy living. Whether you are enjoying a quiet evening, hosting guests, or simply relaxing with a book, this family room offers a comfortable space to enjoy life at its best.



Deck Retreat & Hot Tub

Step outside the family room to a beautifully expansive deck designed for relaxation and enjoyment. Surrounded by lush greenery and natural beauty, this inviting outdoor space features a soothing hot tub – perfect for unwinding under the stars or soaking in the crisp mountain air. The deck provides ample room for lounging and entertaining.





The Deck & Lower Patio

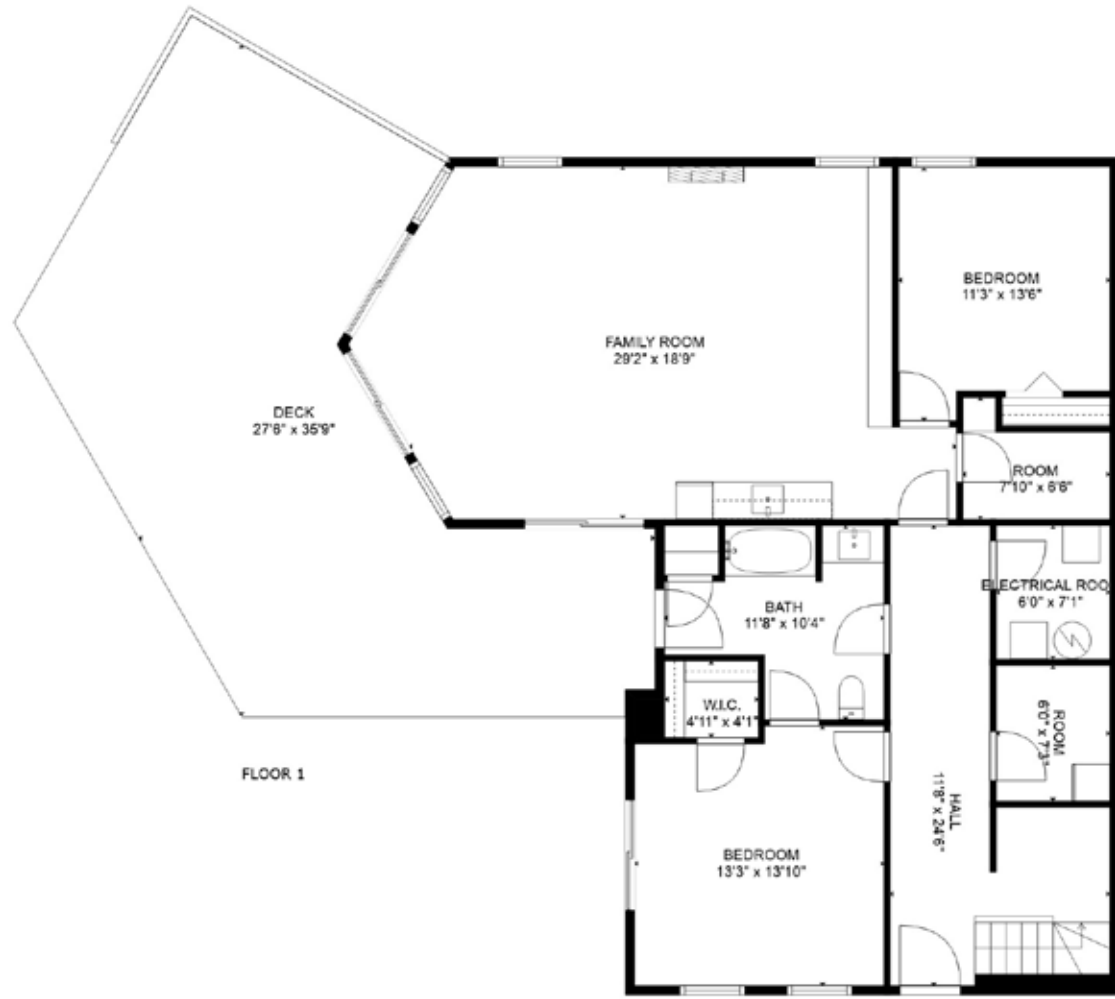
This inviting deck wraps around the side of the home, guiding you to the private hot tub area where relaxation meets nature.



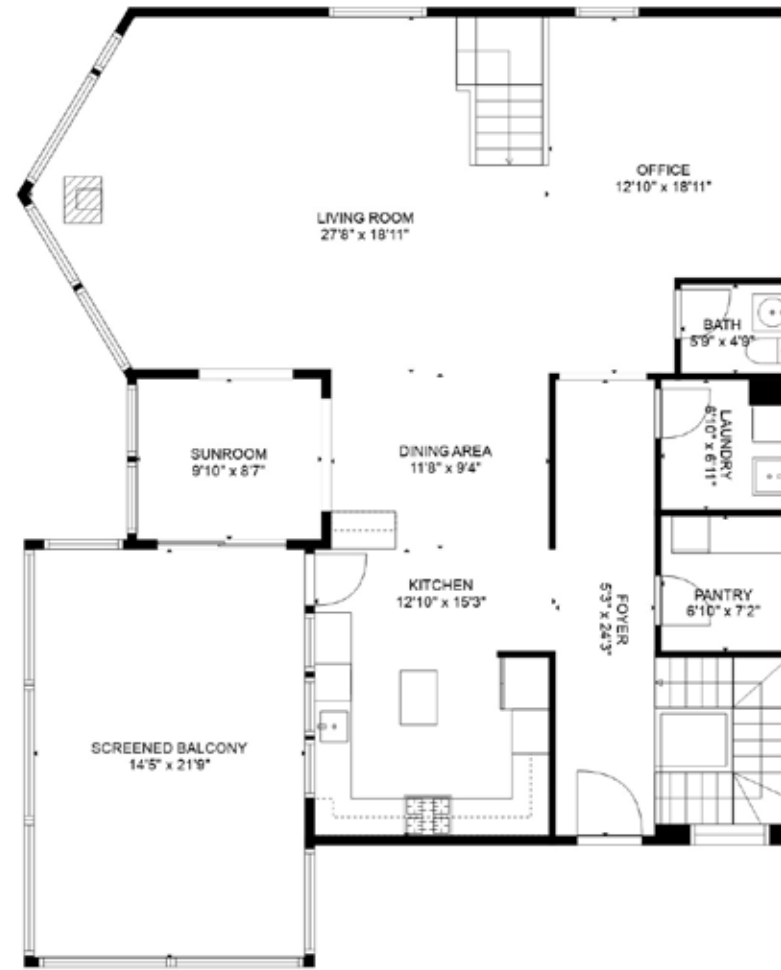


Outbuildings

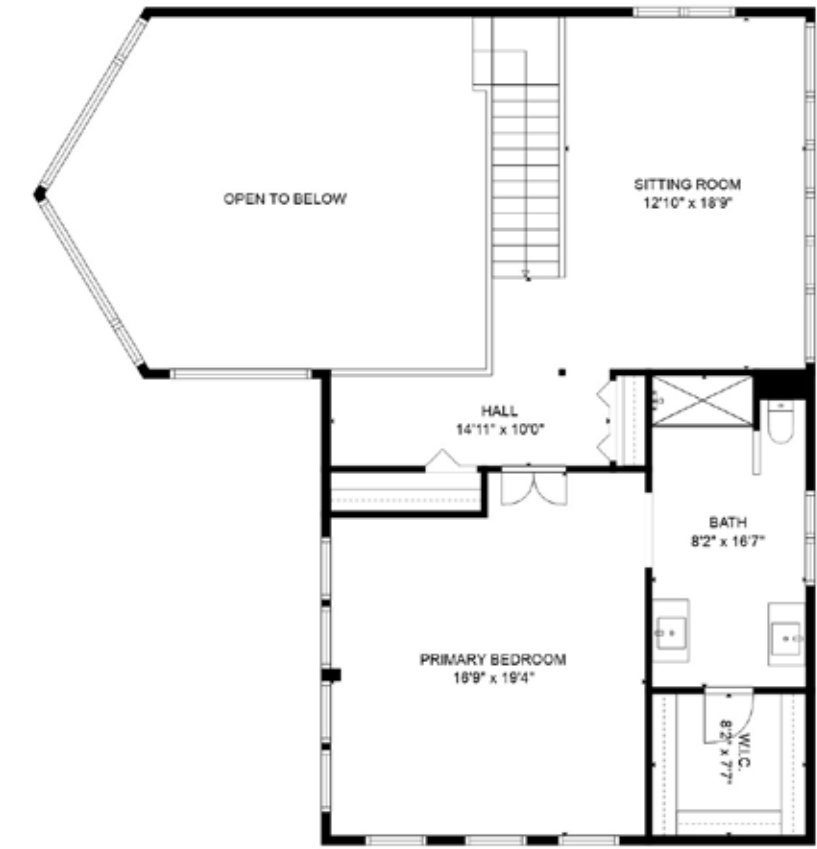
These outbuildings are designed to provide practical storage and workspace solutions. One structure features a two-car garage with roll-up doors, ideal for vehicle storage, equipment, or workshop space. The second building offers a covered, open-sided shelter with additional enclosed storage, perfect for protecting tools, outdoor gear, or creating a dedicated workspace. Both buildings have electricity and are set against a serene, wooded backdrop with gravel driveways for convenient access..



The Terrace Level



Main Level



Upper Level

TOTAL: 3596 sq. ft
 BELOW GROUND: 1234 sq. ft, FLOOR 2: 1419 sq. ft, FLOOR 3: 943 sq. ft
 EXCLUDED AREAS: ELECTRICAL ROOM: 45 sq. ft, ROOM: 40 sq. ft, DECK: 655 sq. ft,
 SCREENED BALCONY: 314 sq. ft, OPEN TO BELOW: 386 sq. ft, LOW CEILING: 8 sq. ft

FLOOR PLAN CREATED BY CUBICASA APP. MEASUREMENTS DEEMED HIGHLY RELIABLE BUT NOT GUARANTEED.

At a Glance

Post & Beam Construction Beautiful Douglas Fir post-and-beam construction with expansive windows showcasing sweeping mountain views, transforming into a stunning panorama during the vibrant fall, tranquil winter, and blossoming spring seasons. The exterior of the home is hardiplank.

Acreage: 42.03

Square Footage: 3950SF

Main Level: 2450SF

Terrace Level: 1500SF

Taxes

2024 Taxes: \$7,700

Subdivision: Emerald Ridge

HOA Dues: \$350/Year. Covers road repair and snow removal.

Floors

Maple, Ceramic Tile

Utilities

Heat & Air: Heat Pump

Two-zone heating system, with gas furnaces.

Internet: Firefly Ready to Install

Propane: Tiger Fuel

Generator

Auto test weekly, and regularly serviced by Virginia Generator Service 434-906-3984

Floor Plan

Main Level

Great Room, Study, Dining Area, Sunroom, Kitchen, Half Bath, Laundry Room, Screened Porch

Upper Level

Loft & Primary Suite with Full Bath

Terrace Level

Family Room with Built In Bar, Full Bathroom, Second Bedroom, Third Bedroom with Murphy Bed, Utility Room, Storage, Hot Tub on Deck

Heated Floors

Sunroom, Primary Bathroom, Terrace-Level Bathroom

Improvements & Replacements

2021 Addition of Screened Porch -A custom design with two sliding screens in the southeast corner that retract nearly their full length away from the corner post, allowing grill smoke to escape..

2022 Installed a new **Trane gas furnace on the upper level**

2022 Replaced **dishwasher** with new LG QuadWash

2023 Replaced **hot tub** with new Sundance Edison Hot Tub

2024 Installed a new **Trane gas furnace on the main level**

2024 **Wet Bar Installation** in the family room on the terrace level.

All information is from sources deemed reliable but is not guaranteed and is subject to errors, omissions, changes in price, prior sale, or withdrawal without notice.






· **MCLEAN ·**
FAULCONER INC.
Farm, Estate and Residential Brokers
Charlottesville, Virginia

Exclusive Listing Agents
Bridget Archer 434-981-4149
Pam Dent 434-960-0161